



## Emser Therme: the basics

**Parking:** You can pay for parking at the Emser Therme check-out or by using one of the machines provided in the car park at Remybrücke and inside the parking garage.

**Entrance:** You will receive a chip bracelet. Please keep the receipt.



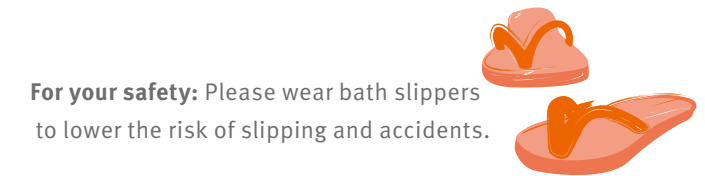
**Lockers and cabinets:** You can freely choose your locker and cabinet. Each chip locks one locker and one cabinet. To lock, press the key against the lock. A light will flash. Turn the lock to the left side. To open, press the key against the lock again. Make sure to remember your locker/cabinet number! If you ever forget your number, please consult our reception staff!



**Rental items:** You can rent dressing gowns and sauna towels for a small fee at the sauna bar or reception.

**Cashless payment:** Consumption, massages and cosmetic treatments are booked via your chip and paid for at the check-out.

**Spontaneous massage?** No problem – simply ask our customer service and sales staff in the entrance area or directly in the WellnessGalerie for free slots. We will be happy to advise you on our versatile range of well-being services.



**For your safety:** Please wear bath slippers to lower the risk of slipping and accidents.



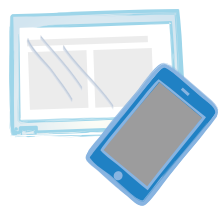
**Hygiene:** Please shower before swimming or enjoying the sauna in order to contribute to our high water quality and hygiene. In the saunas, please place a sauna towel underneath yourself.

**Regard for others:** Please be considerate and refrain from reserving loungers. Baskets are available for your storage needs. Our employees have been instructed to clear reserved loungers if and when necessary.

**Allowance:** A chip station is located between the spa and the sauna, allowing you to check your remaining time allowance.



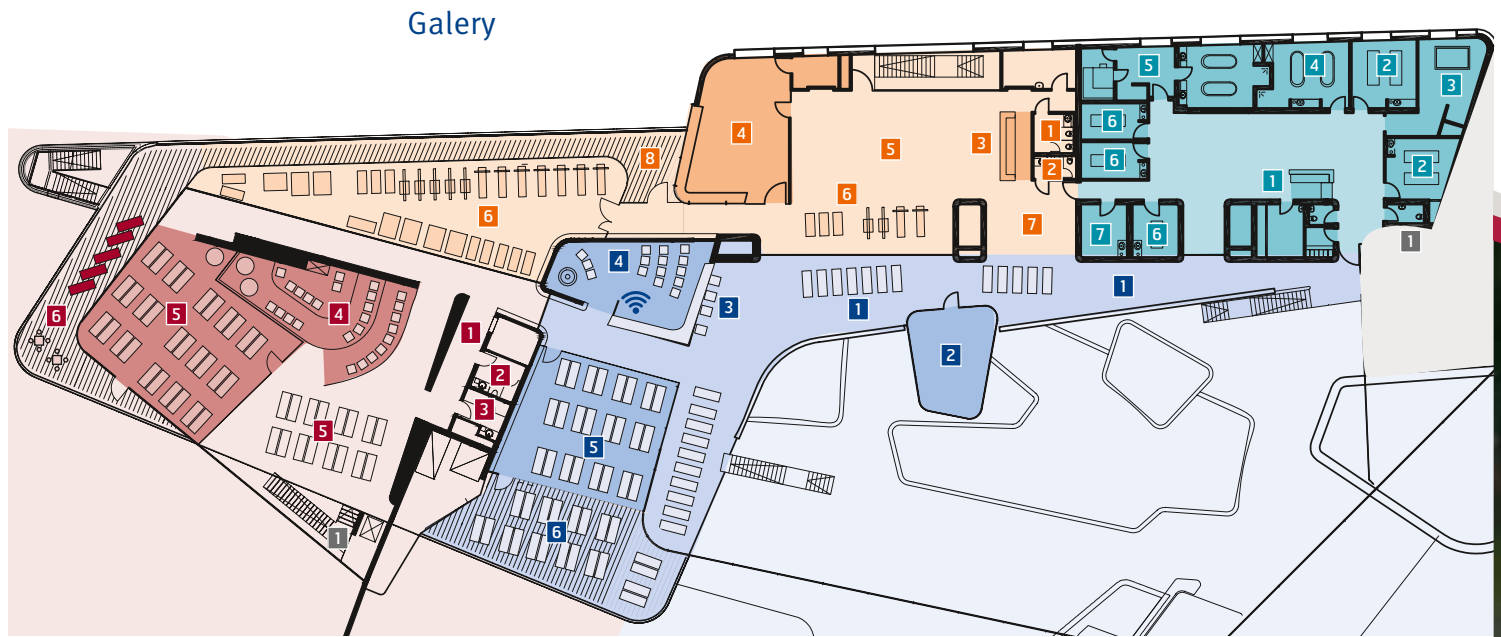
**Check-out:** When leaving the spa, please remember to pick up all your personal belongings and leave the cabinet open. If you have any outstanding payments to make, please consult our check-out staff. If you have paid for everything, you can exit directly through the turnstile.



**Photography and mobile devices** Taking photographs and talking on the phone is not permitted in our facilities. For internet access, please use the designated WiFi area in the spa.



**Smoking:** Smoking is permitted in the designated outdoor smoking areas of the spa. Please do not leave your cigarette butts on the grass. Use the ashtrays provided. The FlussSauna area is a non-smoking area.



### Emser Therme

- 1 Lift and staircase

### Thermal spring area

- 1 Gallery with WiFi and quiet zone
- 2 Emser® Salt inhalation – with original Emser® Salt and relaxation loungers, 35°C
- 3 Infrared chairs
- 4 Fireplace lounge
- 5 Quiet room
- 6 Outdoor terrace

### Fitness panorama

- 1 Ladies toilet
- 2 Gents toilet
- 3 Fitness bar
- 4 Course room
- 5 Power training with Life Fitness machines
- 6 Free training with Life Fitness machines
- 7 Consultation/Fitness check
- 8 Outdoor terrace

### Sauna park

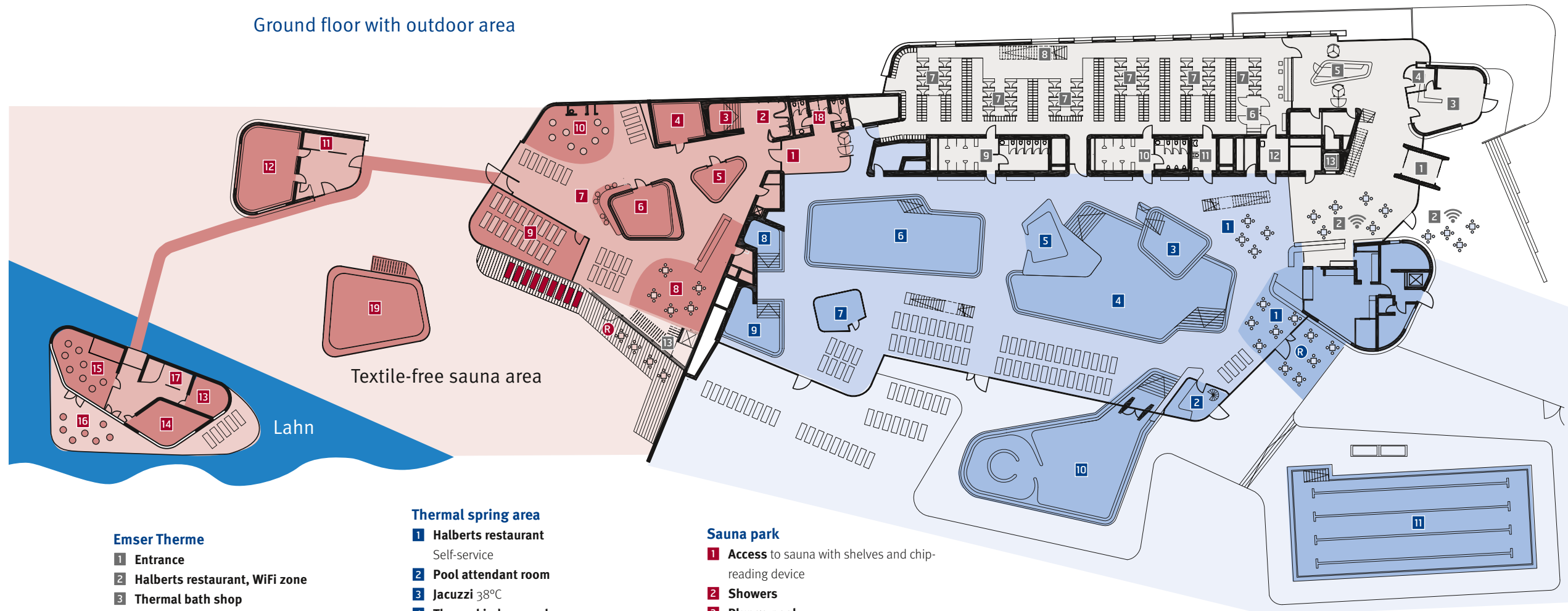
- 1 Shelves
- 2 Ladies toilet
- 3 Gents toilet
- 4 Fireplace lounge
- 5 Quiet room
- 6 Outdoor terrace

### Wellness gallery

- 1 Reception
- 2 Couple's massage room for classic and exotic wellness massages
- 3 Luxury bath – luxurious bath with premium bath essences in stylish surroundings – alone or as a couple
- 4 Floating water bed  
Relax on a special lounger, blissfully wrapped in oil or herb packs
- 5 Hamam with wet massage room and Turkish steam bath. In the Hamam, soap brush or soap sponge massages are offered after warming up in the steam bath
- 6 Massage room for classic and exotic wellness massages
- 7 Cosmetic room



## Ground floor with outdoor area



### Emser Therme

- 1 Entrance**
- 2 Halberts restaurant, WiFi zone**
- 3 Thermal bath shop**
- 4 Consultation**
- 5 Reception**
- 6 Changing room** for people with disabilities and families
- 7 Changing room**
- 8 Fitness panorama staircase**
- 9 Ladies toilet/shower**
- 10 Gents toilet/shower**
- 11 Accessible toilet/shower**
- 12 First aid room**
- 13 Lift**

More toilets can be found on the lower ground floor

### Thermal spring area

- 1 Halberts restaurant**  
Self-service
- 2 Pool attendant room**
- 3 Jacuzzi 38°C**
- 4 Thermal indoor pool**  
with various attractions, 33°C
- 5 Rain area with thermal water, 35°C**
- 6 Exercise pool, 32°C**
- 7 Sidroga® Herbal steam bath,**  
with original Sidroga® herbs, 47°C, 100% humidity
- 8 Cold pool, 18°C**
- 9 Hot pool, 38°C**
- 10 Thermal outdoor pool, 30–34°C,**  
with jet stream and water lounger
- 11 Sport pool, 26°C potable water (open in summer months)**
- R Smoking area**

### Sauna park

- 1 Access** to sauna with shelves and chip-reading device
- 2 Showers**
- 3 Plunge pool**
- 4 Sanarium** – at a temperature of 57°C and humidity of 55%, this provides an especially mild environment for relaxation and comfort.
- 5 Steam bath** – Intensive steam at 45–47°C with 100% humidity produces the same body heating as in a sauna – despite lower temperatures.
- 6 Salt sauna** – Finnish sauna with salt rocks at 85–90°C and a relative humidity of 10–20%
- 7 Heated footbath**
- 8 Sauna bar**

- 9 Quiet room**
- 10 Fireplace lounge**
- 11 Shower**
- 12 Garden sauna** – Sauna baths at 90°C and a relative humidity of 10–20% with a modern ambience. The garden sauna is an infusion sauna.
- 13 Sound sauna** – Finnish sauna at 75°C and a relative humidity of 10%

- 14 Panorama sauna** – sauna with a unique view of the Lahntal at a temperature of 85°C and humidity of 10%. The interior of the infusion sauna is based on the wood panelling of a yacht.
- 15 Lounge with panorama bar**
- 16 Sun deck**
- 17 Showers**
- 18 Toilet/Hygiene showers**
- 19 Sauna-Exercise pool**
- R Smoking area**



2st edition  
Updated: Januar 2018

**Emser.Therme**  
Wellness am Fluss

Emser Therme GmbH  
Viktoriaallee 25  
56130 Bad Ems  
Telephone 02603 9790-0  
info@emser-therme.de

[www.emser-therme.de](http://www.emser-therme.de)

